



**SOUTHLAND
FOUNDATION**

Impact Report

2025



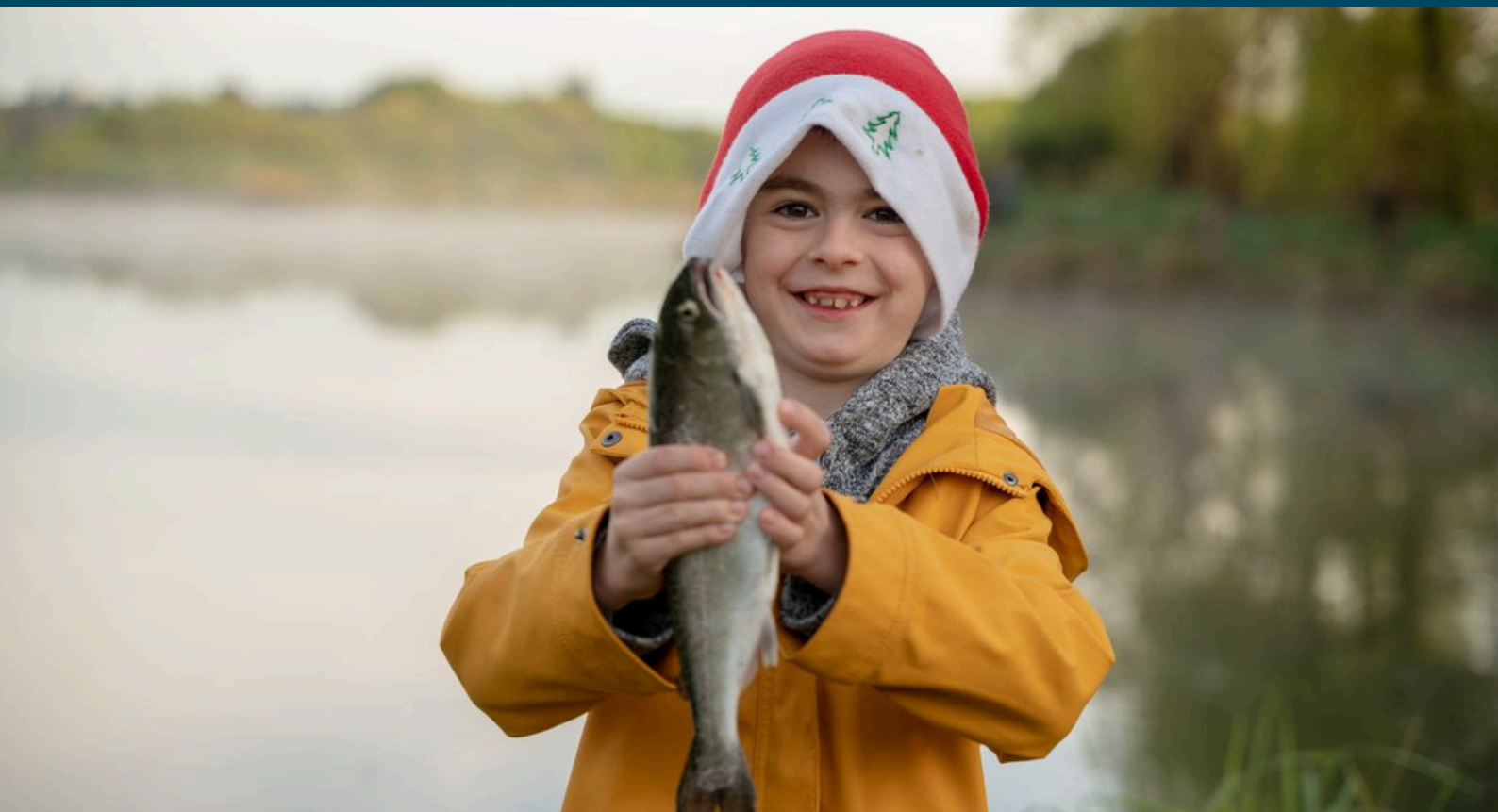


SOUTHLAND
FOUNDATION

Our Vision

A Southland where giving is ingrained in our regions identity.

Together, lets build an exceptional Southland.



“Teach a man to fish and you feed him for a lifetime”. This guiding principle reflects our belief in the impact of empowerment and self sufficiency. Together we can empower communities to become architects of their own success, creating ripple effects of positive change throughout our Southland communities.

Our Purpose

To secure and grow generosity to support and strengthen Southland communities, forever.



Our Values

Ambitious

We have a growth mindset, strive for excellence and continuously push boundaries to bring about meaningful and lasting change.

Connected

We build trusted relationships and collaborate to achieve positive outcomes. We have effective regional engagement. We leverage the impact of storytelling, motivating donors giving to causes that resonate with their values and passions.

Local

We support the region's ability to determine its own path forward and that sustainable positive change comes from within our community. We are agile and responsive to the changing needs of Southland communities.

Our People

Board of Trustees - The Southland Foundation is governed by a dedicated group of volunteer trustees who generously contribute time and expertise to support and strength the Southland community.



Kathryn Ball

Trustee Chair



Jeff Grant

Trustee Deputy Chair



Joe O'Connell

Trustee



Sarah Collie

Trustee



Sarah Brown

Trustee

Our People

Staff - Our staff manage the day to day operations of the Foundation. Their work supports community and donor engagement, financial management, sharing our stories and ensuring strong strategic and professional partnerships.



Robyn Koehler

General Manager



Rachel Cockburn

Development Manager



Belinda Archer

Admin/Marketing

Committees

Investment Committee

Stephen O'Connor

Steve Oliver

Sarah Collie

Joe O'Connell

Our Year in Review

We are delighted to bring you our first Impact Report.

This has been a year of significant achievements for the Southland Foundation. Starting with our launch in May 2024, achieving \$885,550.00 funds under management and a total of 7 funds in our first year.

In early 2025, we farewelled Sarah Hannan, our founding CE. Sarah's departure marked the conclusion of her planned term in the role; during which she played a pivotal role in the creation and growth of the Southland Foundation. From leading its initial feasibility work to launching the Foundation and securing key local partnerships and our first endowment funds, Sarah's leadership laid a strong foundation for the future. We thank her for her vision and dedication, and for the enduring legacy she has created for generations of Southlanders to come.

As the 18th Community Foundation, we are part of a supportive network across New Zealand. We continue to benefit from the generosity of time, guidance and support of CFANZ and other Community Foundations as we embed your Foundation in Southland.

Guided by a well established giving model we provide a simple and long-lasting way to connect generous donors with causes close to their hearts. Over the last year staff and trustees have been out and about engaging with individuals, communities and professional advisors across the region raising awareness of the Foundation, the opportunities for giving and the lasting impact generosity can have. The very generous support of our founding partner SBS through a \$5m interest free loan enabled us to more quickly scale up and showed to others trust and confidence in the Foundation and our giving model. We are thrilled that SBS has chosen that the interest earned from the \$5m loan is to be directed to the Southland Impact Fund.

We continue to be humbled by the generosity of our early donors with seven funds established over the last year.

These include three named endowment funds, two Community Group Funds, one Sub Regional Fund (for Fiordland), and the Southland Impact Fund. We know of three other donors who have chosen to leave a gift in their will to the Foundation, providing a lasting legacy for them.

We extend our gratitude to our strategic funding partners ILT, Community Trust South and Distinction Hotels, for their invaluable operational support, and to the donors who have also chosen to support the work that goes on behind the scenes. This has enabled us to confidently move forward.

Our professional partners, who have committed to generously sharing their time, knowledge and resources at no cost, play an important role in ensuring the Foundation is well established, efficient and effective. We gratefully thank them also.

To our volunteer trustees and committee members, your wealth of experience and commitment to your place and the people of Southland ensures the Foundation will go from strength to strength as you very ably steward the resources entrusted to us.

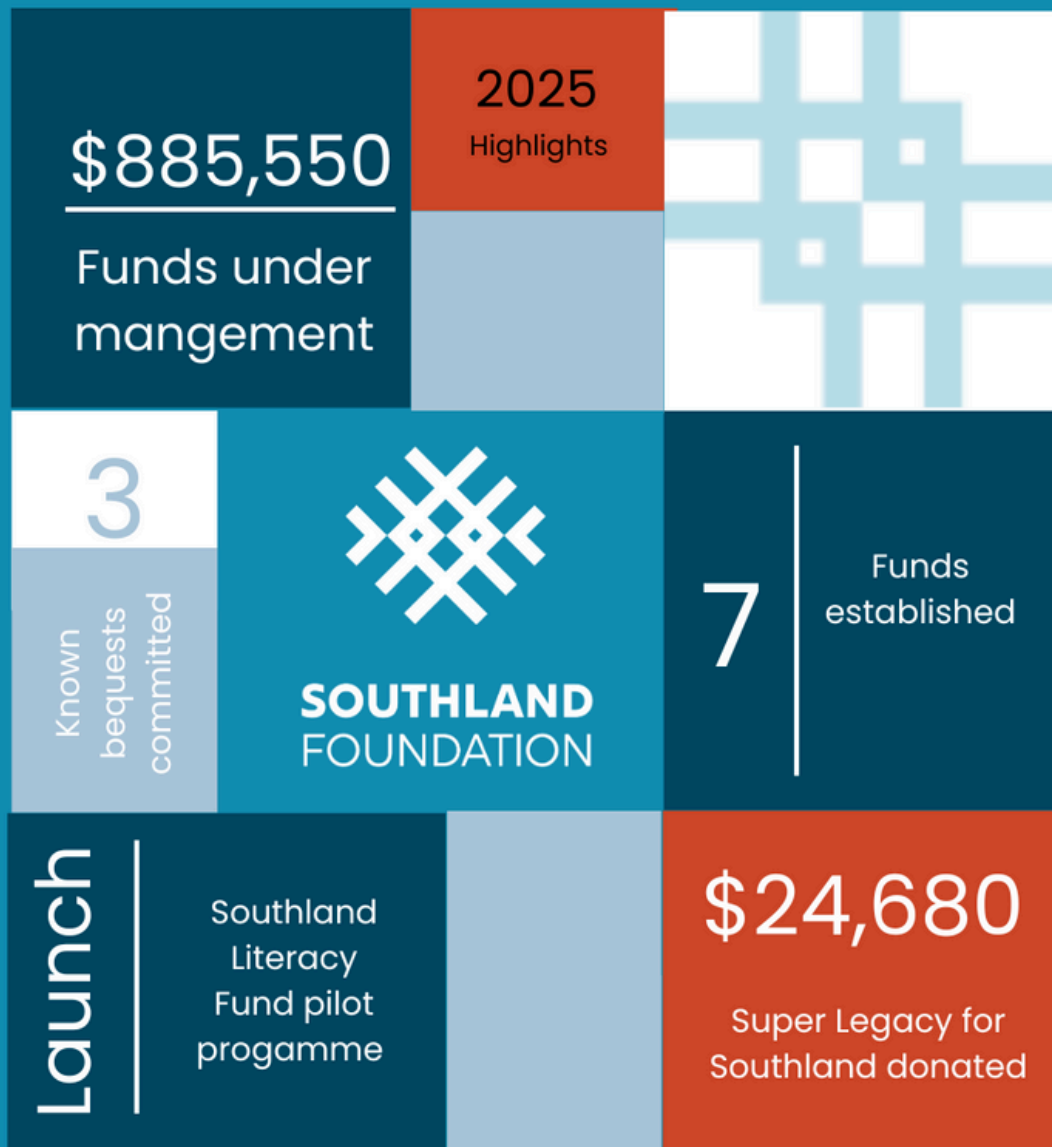
To our committed and dedicated staff who go above and beyond, thank you for the energy and the passion you bring to your roles.

And finally, thank you to everyone who has joined us on this exciting journey, together lets continue to build a successful Community Foundation in Southland, which will help to build an exceptional Southland for all for years to come.

Kathryn Ball
Chair

Robyn Koehler
General Manager

Our Highlights



Our Funds

Southland Literacy Fund.



Southland Impact Fund.



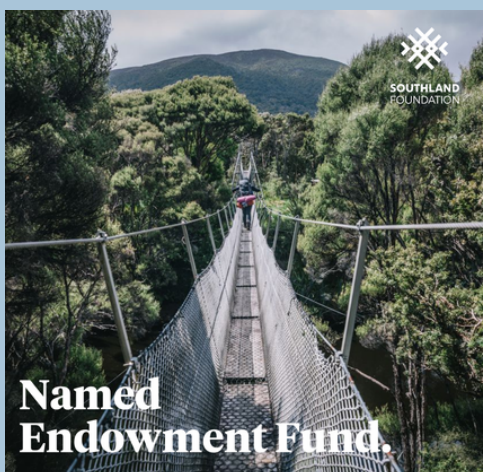
Hawthorndale Care Village Fund.



Fiordland Regional Fund.



Named Endowment Fund.



Te Whare Hou Invercargill Women's Refuge Fund.



Building Bright Futures Fund.



Our Stories



April 03, 2024

**STORY: Southland Foundation:
Inspiring Giving, Creating
Impact**



May 29, 2024

**STORY: Southland Foundation
proudly launches**



May 30, 2024

**STORY: SBS Bank announces
interest free loan to kickstart
Southland Foundation**



June 11, 2024

**STORY: Southland Foundation,
officially launches in Te Anau**



July 31, 2024

**STORY: Foundation launches
in Gore, advancing collective
philanthropy**



August 20, 2024

**DONOR STORY: Hawthorndale
Care Village Endowment Fund
Established**



September 05, 2024

**STORY: Southland Foundation
Hits Funding Milestone, Three
Months Post Launch**



November 26, 2024

**STORY: New Southland
Literacy Fund**



March 18, 2025

**STORY: Te Whare Hou
Invercargill Women's Refuge
Fund Underway**

To learn more about our stories and wonderful donors please visit
southlandfoundation.org.nz

Our Partners

Founding Partner

Inaugural donor, laying the foundation for positive impact and meaningful change.



Strategic Partners

Our partners supporting us to operate and grow.



Murihiku Runaka and Rio Tinto/NZAS Community Development Fund



Te Rūnaka o Awarua



Our Partners

Professional Partners

Offering time, resource and skills to help us realise our vision.



NAKED



SOUTHLAND
FOUNDATION

Impact Report 2025

PO Box 1298, Invercargill, 9840

021 444 929

info@southlandfoundation.org.nz

southlandfoundation.org.nz

Photo credits: Great South Visual Library